



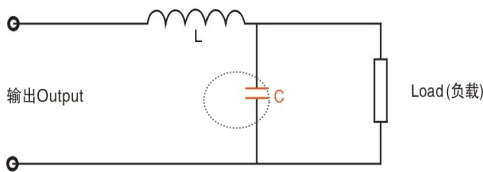
执行国际标准
 干式结构
 高的过电流和过电压
 低 ESL
 低 ESR
 自愈合能力
 渐变金属化层
 铝壳，树脂灌注

IEC 61071/60068
 Dry type structure
 High over-voltage and over-current
 Low ESL
 Low ESR
 Self-healing
 Transition metal layer
 Aluminum resin infusion

ELECTRICAL CHARACTERISTICS

容量范围	Capacitance Range	3X20~3X500μF
使用温度	Operating Temperature	-40°C ~ +85°C
容量偏差	Capacitance Tolerance	±5%(J);±10% (K)
额定电压	Rated Voltage	400 ~ 2000V.AC <Up to 10kV ac on request>
耐电压	Test Voltage between Terminal	1.5Un 10s @25°C
极壳耐压	Test Voltage between Terminal/Case	3000V 50Hz for 2 s
海拔	Max.Altitude	< 2000m
阻燃性	Flame Resistance	UL 94V-0
预期寿命	Lifetime Expectancy	≥30,000Hours (Un,≤70°C)

TYPICAL CIRCUIT



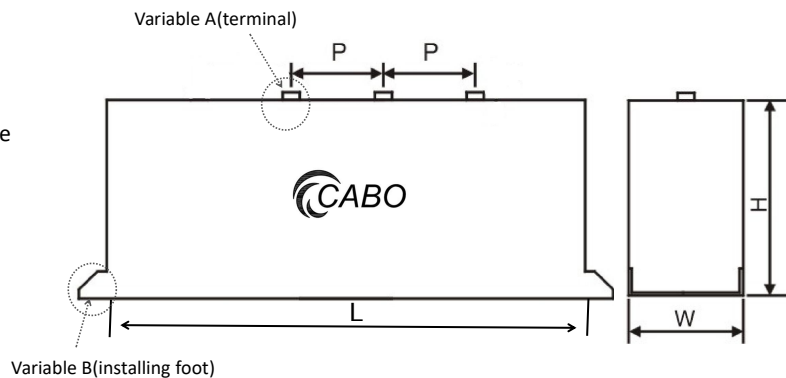
AC filter application. For improving power factor, reducing energy consumption.

交流输出滤波用。配合电抗器组成就地或者无功补偿装置，提高电网功率因素，降低能耗。

OUTLINE DRAWING

Variable A (terminal)	Variable B (installing foot)
Any quantity/any type	Every position

- > “Delta Δ ” and “star Y” connection available
- > Single phase ac filter capacitor available



COMMON DESIGN (mm)

Un(Rated Voltage)	Cn	L	W	H	Irms (A)	Weight (KG)
400VAC	3x200μF	225	120	170	3X70	6.2
	3x300μF	225	120	235	3X90	8.7
	3x400μF	295	120	235	3X120	11.2
	3x500μF	365	120	235	3X160	14.5
500VAC	3x120μF	225	120	170	3X50	6.2
	3x180μF	225	120	235	3X70	8.7
	3x240μF	295	120	235	3X100	11.2
	3x300μF	365	120	235	3X120	14.5
690VAC	3x50μF	225	120	170	3X40	6.2
	3x75μF	225	120	235	3X60	8.7
	3x100μF	295	120	235	3X80	11.2
	3x125μF	365	120	235	3X100	14.5
1000VAC	3x20μF	225	120	170	3X20	6.2
	3x30μF	225	120	235	3X40	8.7
	3x45μF	295	120	235	3X50	11.2
	3x55μF	365	120	235	3X70	14.5

上述尺寸参数可按需调整长宽高。(Customization available)

注:以上参数仅作参考,请以实际图纸为准。规格较多,无法一一列出,有疑问请联系您的客服。

Note:The above parameters are just for your reference only,the details please check your specification.

Cylindrical type option available for AKMJ series ac filter capacitors,Please contact us for details.

