

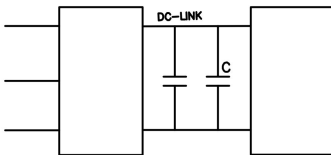


执行国际标准	IEC 61071
干式结构	Dry type structure
高的过电流和过电压	High over-voltage and over-current
低 ESL	Low ESL
低 ESR	Low ESR
自愈合能力	Self-healing
渐变金属化层	Transition metal layer
铝壳, 树脂灌注	Aluminum resin infusion
真空灌注	VARI
大外径卷轴	Outer diameter reel

ELECTRICAL CHARACTERISTICS

容量范围	Capacitance Range	48 ~ 3500 μ F
使用温度	Operating Temperature	-40°C ~ +85°C
容量偏差	Capacitance Tolerance	$\pm 5\%$ (J); $\pm 10\%$ (K)
额定电压	Rated Voltage	400 ~ 8000V.DC
耐电压	Test Voltage between Terminal	1.5Un 60s
极壳耐压	Test Voltage between Terminal/Case	$\sqrt{2} * Un \leq 1000, 2000VAC(60s)$ $\sqrt{2} * Un > 1000, (\sqrt{2} * Un + 1000)VAC(60s)$
绝缘电阻	Insulation Resistance	$R * C \geq 5000S(100VDC, 60S)$
海拔	Max.Altitude	< 2000m
阻燃性	Flame Resistance	UL 94V-0
电极扭矩	Max Torque of terminals	6Nm
安装扭矩	Max Torque of installation	10Nm
预期寿命	Lifetime Expectancy	$\geq 100,000$ Hours ($Un \leq 85^\circ C$)
失效率	Failure	50FIT

TYPICAL CIRCUIT



It can be widely used in:

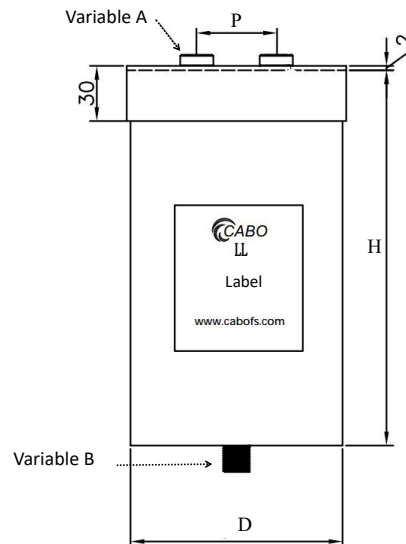
Wind power, Solar power, Welding machine, Frequency converter, Switch power supply, Plating power supply, UPS.
For DC-link, energy storage and filter.

应用于:

风电逆变器/ 太阳能逆变器/ 电焊机/ 变频器/ 开关电源/ 电镀电源/ 不间断电源等设备的直流支撑、储能和滤波。

OUTLINE DRAWING

Variable A	Variable B
Nuts /Bolts	Bolt/Null
M6/M8/M12	M8*12mm/M12*16mm



COMMON DESIGN (mm)

Un(Rated Voltage)	Cn	ΦD	H	P	Weight(Kg)
800VDC	200μF	76	72	32/45	0.48
	420μF	76	135	32/45	0.77
	500μF	86	125	32/45/50	0.94
	1000μF	116	125	45/50	1.72
1100VDC	300μF	86	125	32/45/50	0.94
	420μF	86	155	32/45/50	1.16
	470μF	86	178	32/45/50	1.34
	750μF	116	150	45/50	2.04
1200VDC	330μF	86	175	32/45/50	1.32
	420μF	116	125	45/50	1.72
	470μF	116	135	45/50	1.85
	680μF	116	175	45/50	2.40
	1000μF	116	255	45/50	3.50
2000VDC	100μF	86	125	32/45/50	0.94
	200μF	96	175	45/50	1.65
	400μF	116	225	45/50	3.09

(Customization available)

注:以上参数仅作参考, 请以实际图纸为准。规格较多, 无法一一列出, 有疑问请联系您的客服。

Note:The above parameters are just for your reference only,the details please check your specification.